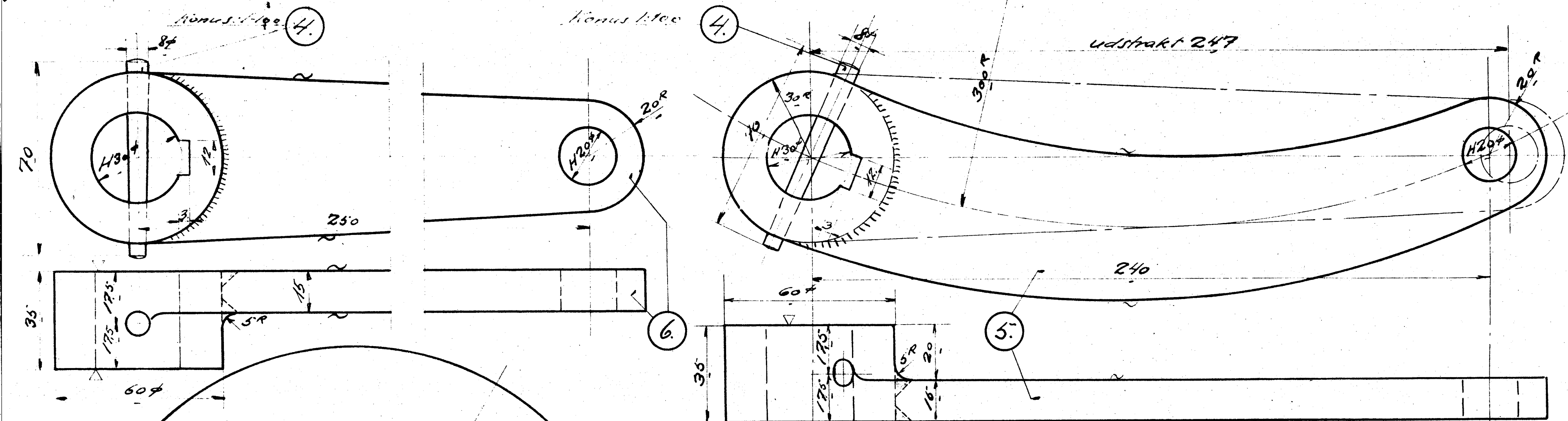
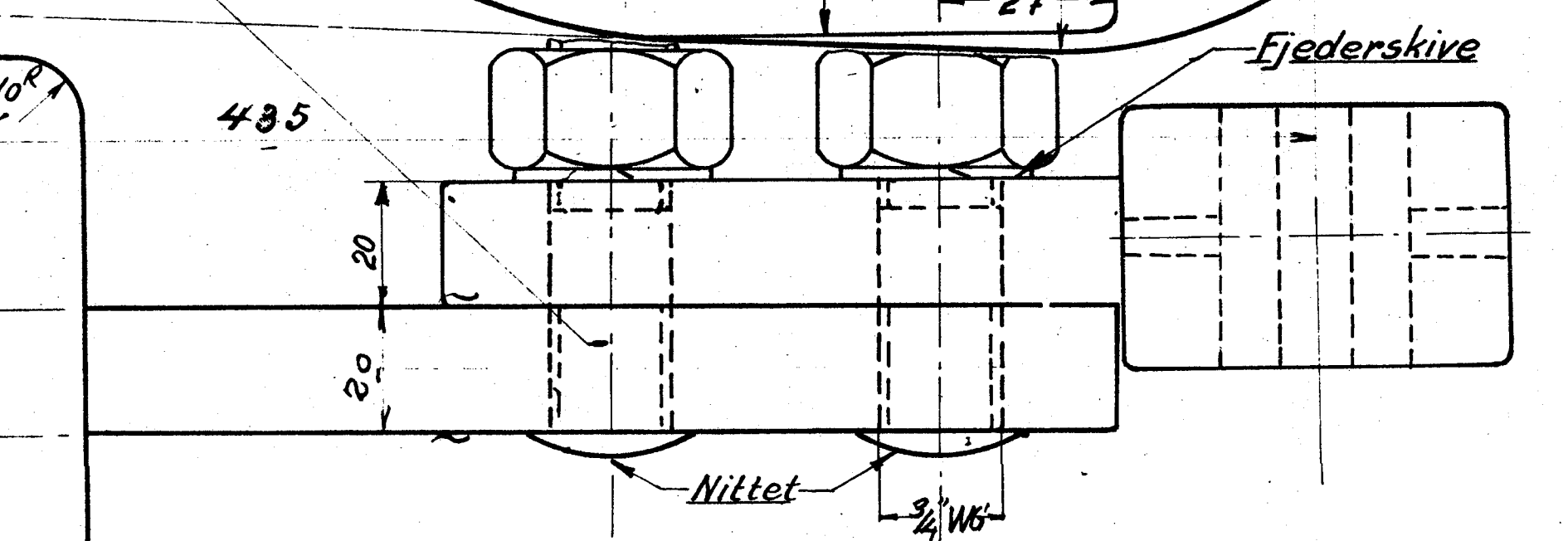
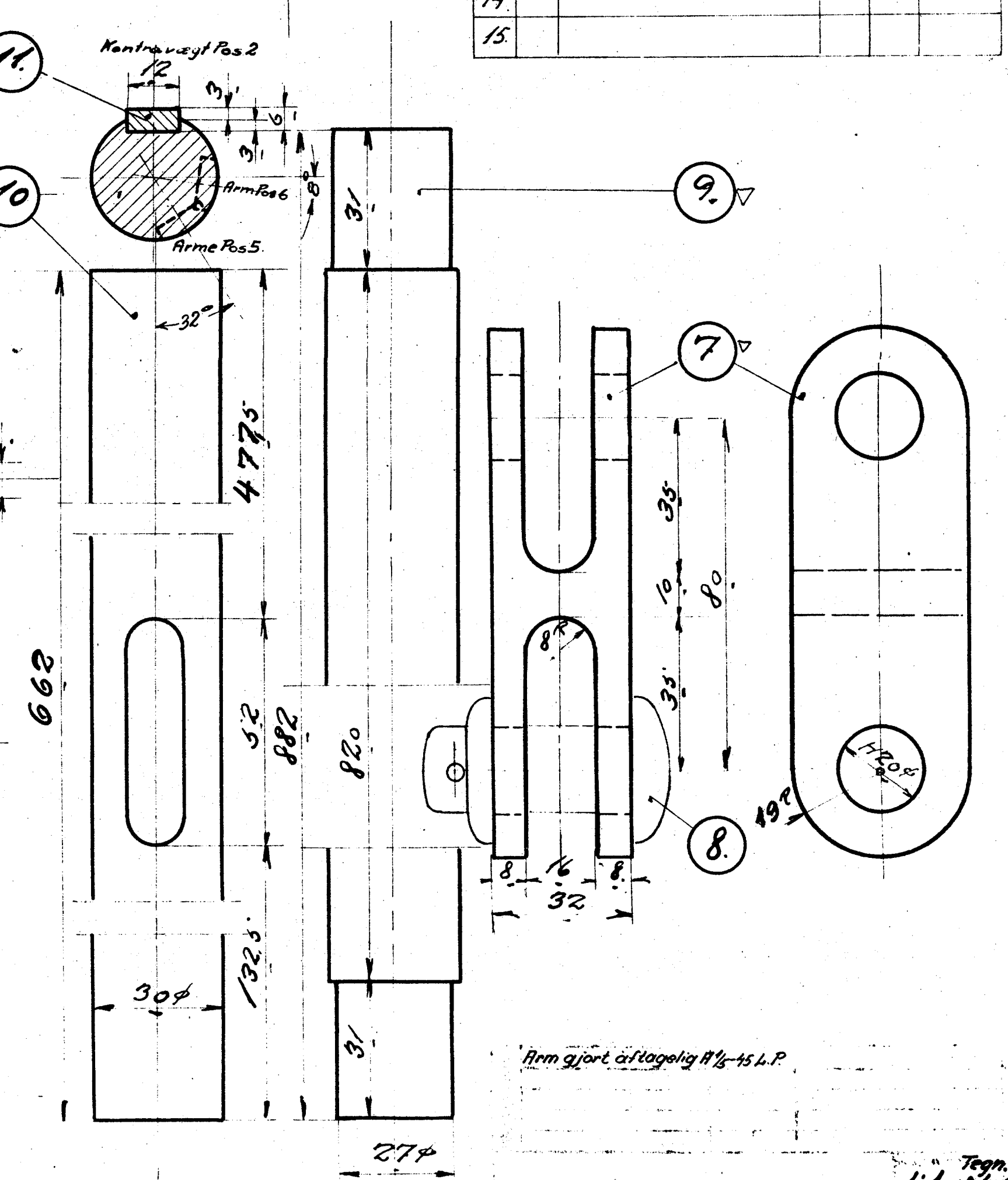
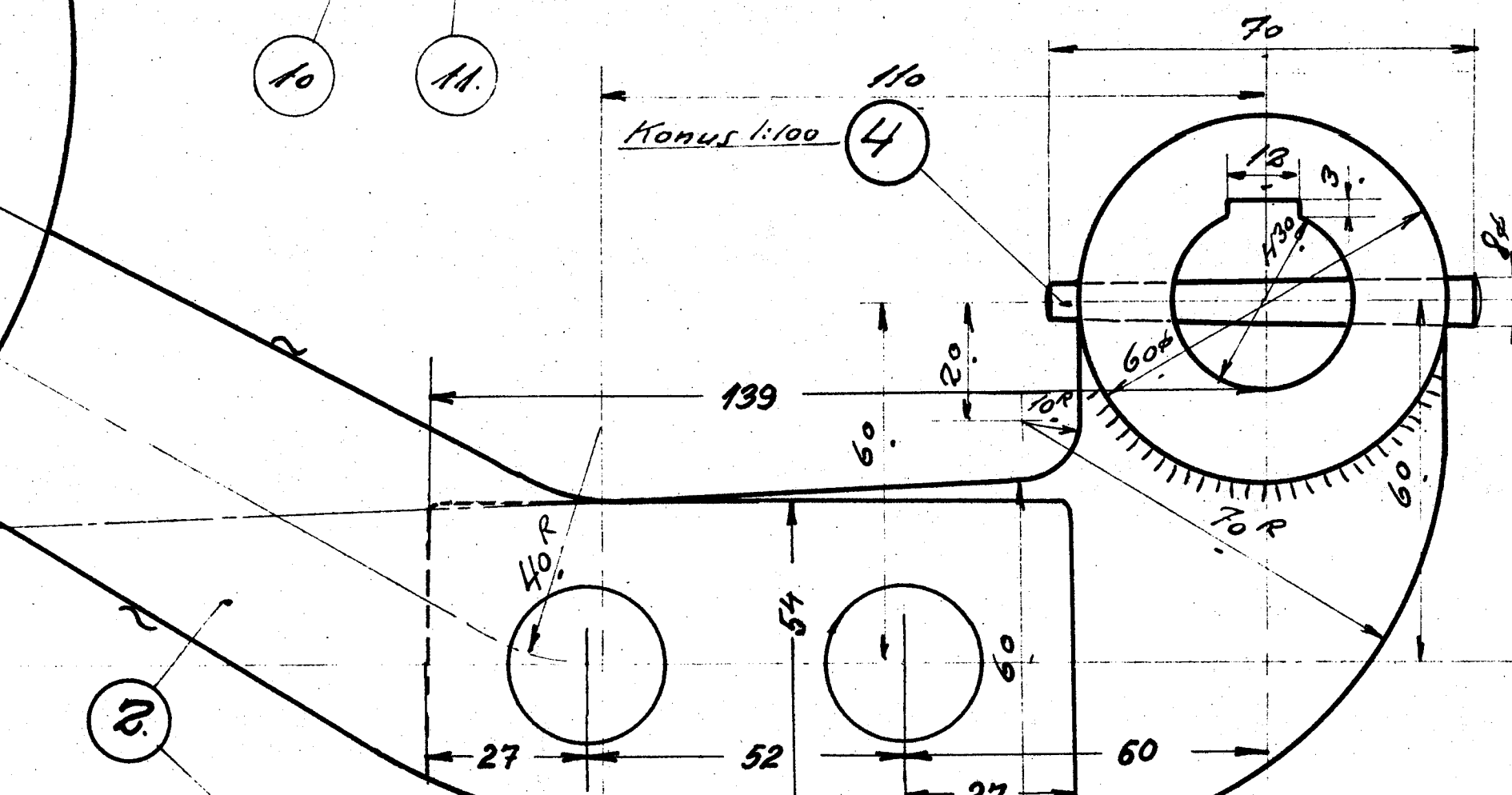
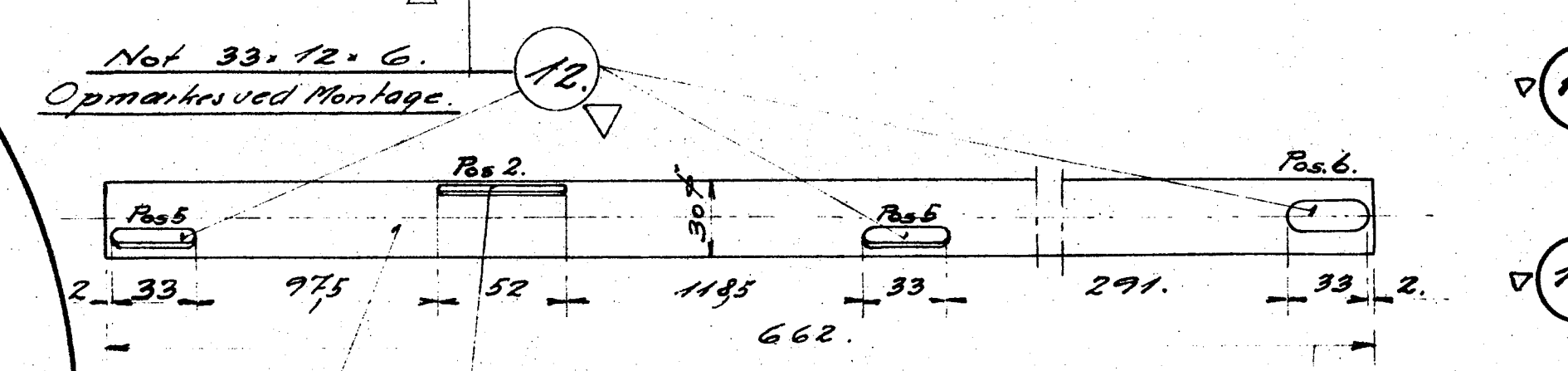
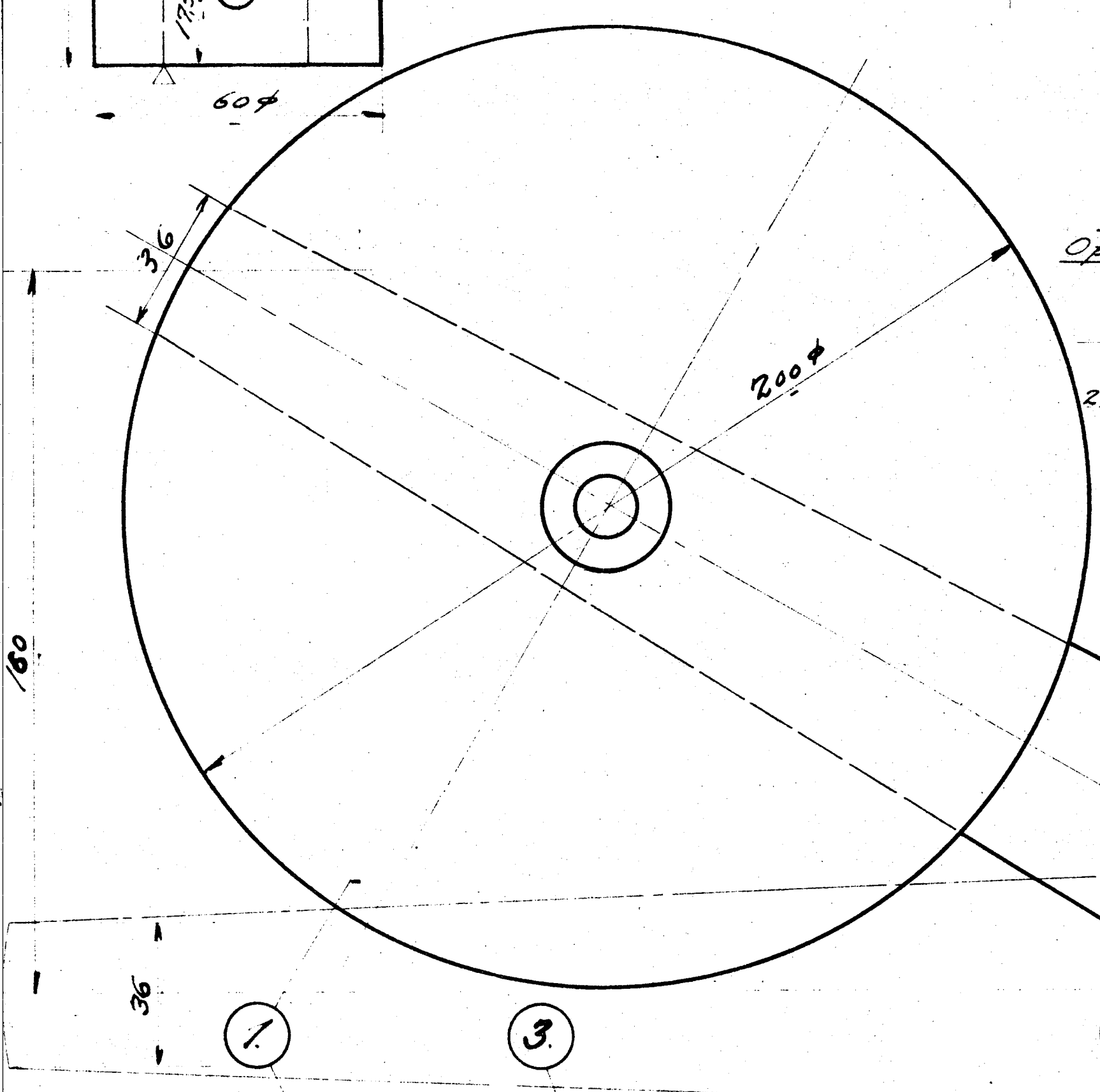


42234.



|     |  |                        |
|-----|--|------------------------|
| 1.  | 1 Kontravægt                           | Hm 6L 285              |
| 2.  | 1 Arm                                  | Støt. 12x20x500        |
| 3.  | 1 Nagle                                | jern 60x50             |
| 4.  | 4 Konisk Stift 6x10                    | 13x130                 |
| 5.  | 2 Arm                                  | D5 Mapek 75x45x560     |
| 6.  | 1 do.                                  | 60x90                  |
| 7.  | 2 Trækstang                            | 65x45x280              |
| 8.  | 4 Splitbolt. se Teg. 9L-244 to Nr. 13. | 60x45                  |
| 9.  | 1 Aksel                                | 38x38x250              |
| 10. | 1 do.                                  | Blank. Rustjern 30x900 |
| 11. | 1 Nokkile                              | 30x675                 |
| 12. | 3 do.                                  | Flas. jern 16x10x60    |
| 13. |  | 16x10x120              |
| 14. |  |                        |
| 15. |  |                        |



Not 33x12x6.  
Opmærksomhed Montage.

Arm gjort af tagelig H 1/2-15 L.P.

Tegn. Frichs.  
1:1. Nr. 9L-7180.  
1:25. Indt.  
1:25. Dera

Dele til Bundklapi Askekasse.  
D. Tenderloko. Litra Q. 7180

Eschbacher-Tegn. Nr. 6L-2850